



JANUARY						
S	M	T	W	T	F	S
1	2	3	4	5	6	7
8	9	10	11	12	13	14
15	16	17	18	19	20	21
22	23	24	25	26	27	28
29	30	31

FEBRUARY						
S	M	T	W	T	F	S
.	.	.	1	2	3	4
5	6	7	8	9	10	11
12	13	14	15	16	17	18
19	20	21	22	23	24	25
26	27	28

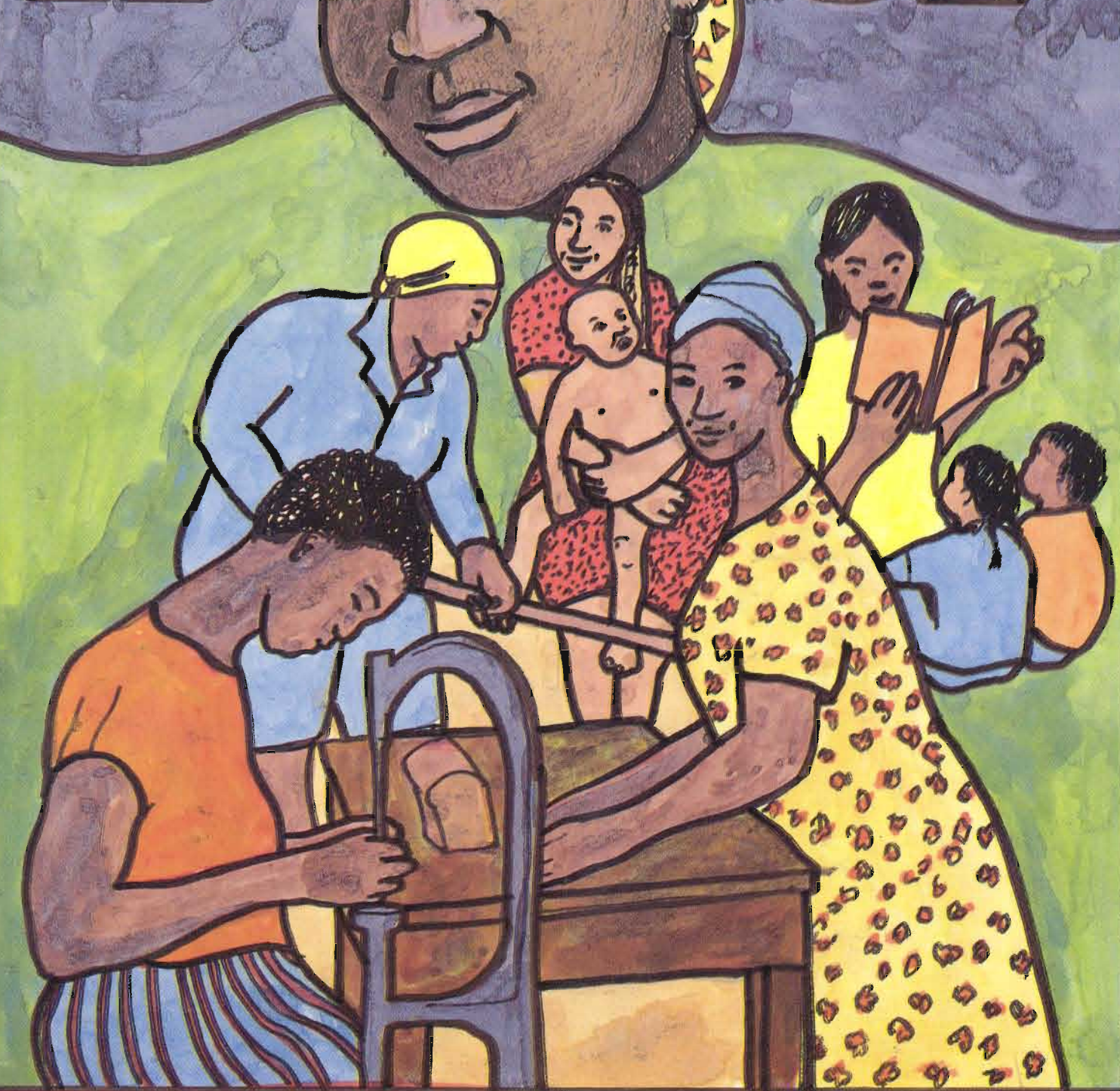
DATES TO REMEMBER:	
FEBRUARY:	14/15 (Meth.) Women's Auxilliary District Meeting (Rosebank Meth. Church)
25 (Meth.) Internat. Women's Dinner Bellville-South Civic	21 Sharpeville/Langa Mem. Service.
MARCH:	3 International Women's Day World Day of Prayer (Zwelonke)
4 Women's World Day of Prayer	25 Mother's Day (Mangano) (St. George's Cath.)
12 Detainees Day (Meth.) Women's Mangano Conv.	

DECEMBER						
S	M	T	W	T	F	S
.	1	2
3	4	5	6	7	8	9
10	11	12	13	14	15	16
17	18	19	20	21	22	23
24	25	26	27	28	29	30
31

1988 ECUMENICAL DECADE OF WOMEN 1998

CHURCHES IN SOLIDARITY WITH WOMEN

1989



MARCH						
S	M	T	W	T	F	S
.	.	.	1	2	3	4
5	6	7	8	9	10	11
12	13	14	15	16	17	18
19	20	21	22	23	24	25
26	27	28	29	30	31	.

NOVEMBER						
S	M	T	W	T	F	S
.	.	.	1	2	3	4
5	6	7	8	9	10	11
12	13	14	15	16	17	18
19	20	21	22	23	24	25
26	27	28	29	30	.	.

APRIL						
S	M	T	W	T	F	S
.	1
2	3	4	5	6	7	8
9	10	11	12	13	14	15
16	17	18	19	20	21	22
23	24	25	26	27	28	29
30

OCTOBER						
S	M	T	W	T	F	S
1	2	3	4	5	6	7
8	9	10	11	12	13	14
15	16	17	18	19	20	21
22	23	24	25	26	27	28
29	30	31

MAY						
S	M	T	W	T	F	S
.	1	2	3	4	5	6
7	8	9	10	11	12	13
14	15	16	17	18	19	20
21	22	23	24	25	26	27
28	29	30	31	.	.	.

SEPTEMBER						
S	M	T	W	T	F	S
.	.	.	.	1	2	.
3	4	5	6	7	8	9
10	11	12	13	14	15	16
17	18	19	20	21	22	23
24	25	26	27	28	29	30

JUNE						
S	M	T	W	T	F	S
.	.	.	.	CHILDREN'S DAY	2	3
4	5	6	7	8	9	10
11	12	13	14	15	16	17
18	19	20	21	22	23	24
25	26	27	28	29	30	.

DATES TO REMEMBER:	
MAY:	AUGUST
13 Anglican Women's Fellowship (A.W.F.) AGM.	26 A.W.F. Mother's Union Service (St. George's Cath.)
JUNE:	SEPTEMBER:
16 Youth Day	9/10 A.W.F. Exhibition Gordon's Institute Mowbray.
19 AME Women's Miss. Institute.	OCTOBER:
JULY:	21/22 Moravian Women's Conf.
29 Mary, Martha's Day Service. (Heideveld)	21 Catholic Women's League Nat. Conf.
AUGUST:	NOVEMBER:
9 National Women's Day	25 A.W.F. Thanksgiving Day

AUGUST						
S	M	T	W	T	F	S
.	.	1	2	3	4	5
6	7	8	9	10	11	12
13	14	15	16	17	18	19
20	21	22	23	24	25	26
27	28	29	30	31	.	.

JULY						
S	M	T	W	T	F	S
.	1
2	3	4	5	6	7	8
9	10	11	12	13	14	15
16	17	18	19	20	21	22
23	24	25	26	27	28	29
30	31

WOMEN'S DIVISION

WESTERN PROVINCE COUNCIL OF CHURCHES

Community House
41 Salt River Rd, Salt River
Tel: 47-5086