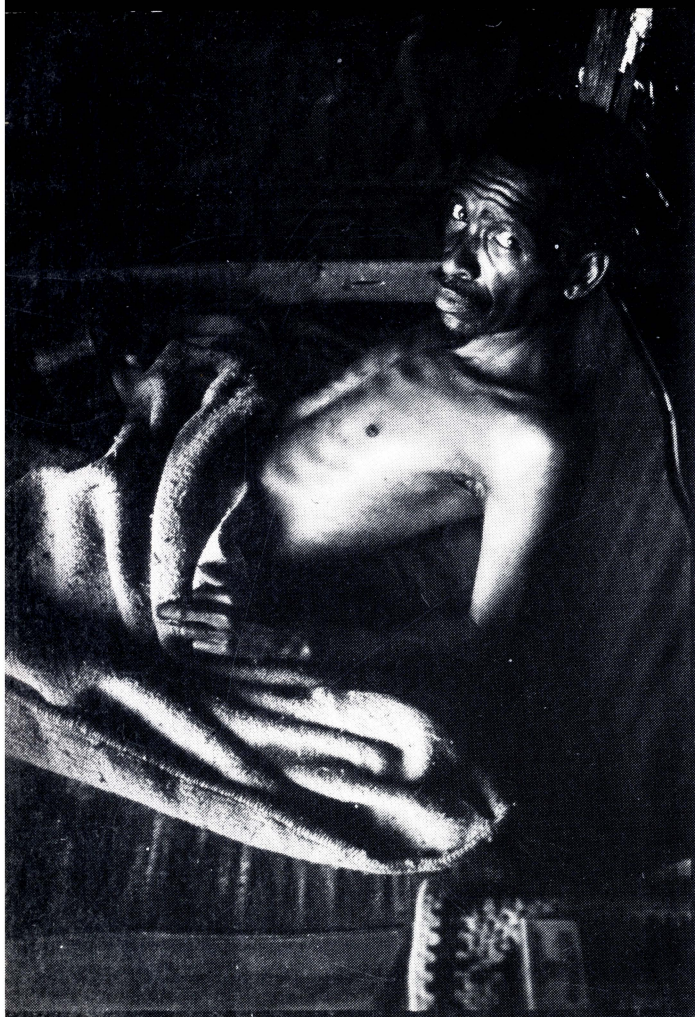




Elukhanyweni 1982 - widow

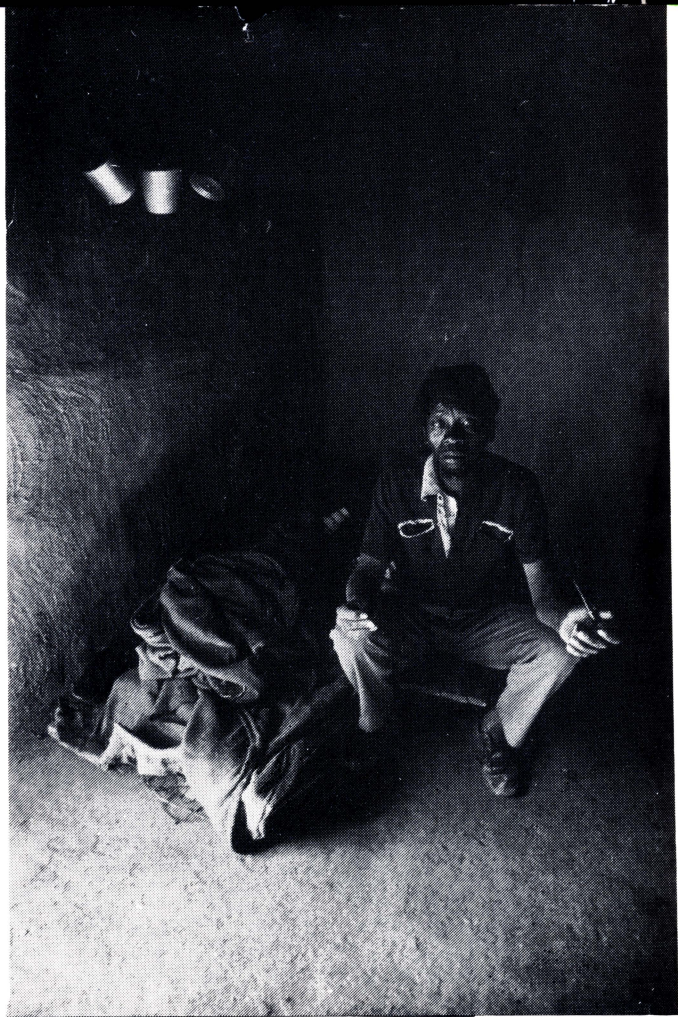
Elukhanyweni 1982 - church group on Sunday





Ndevana 1981 - sick man

Elukhanyweni 1979



Elukhanyweni 1979  
father next to children's bed





Phakamisa 1981

Ndevana 1981





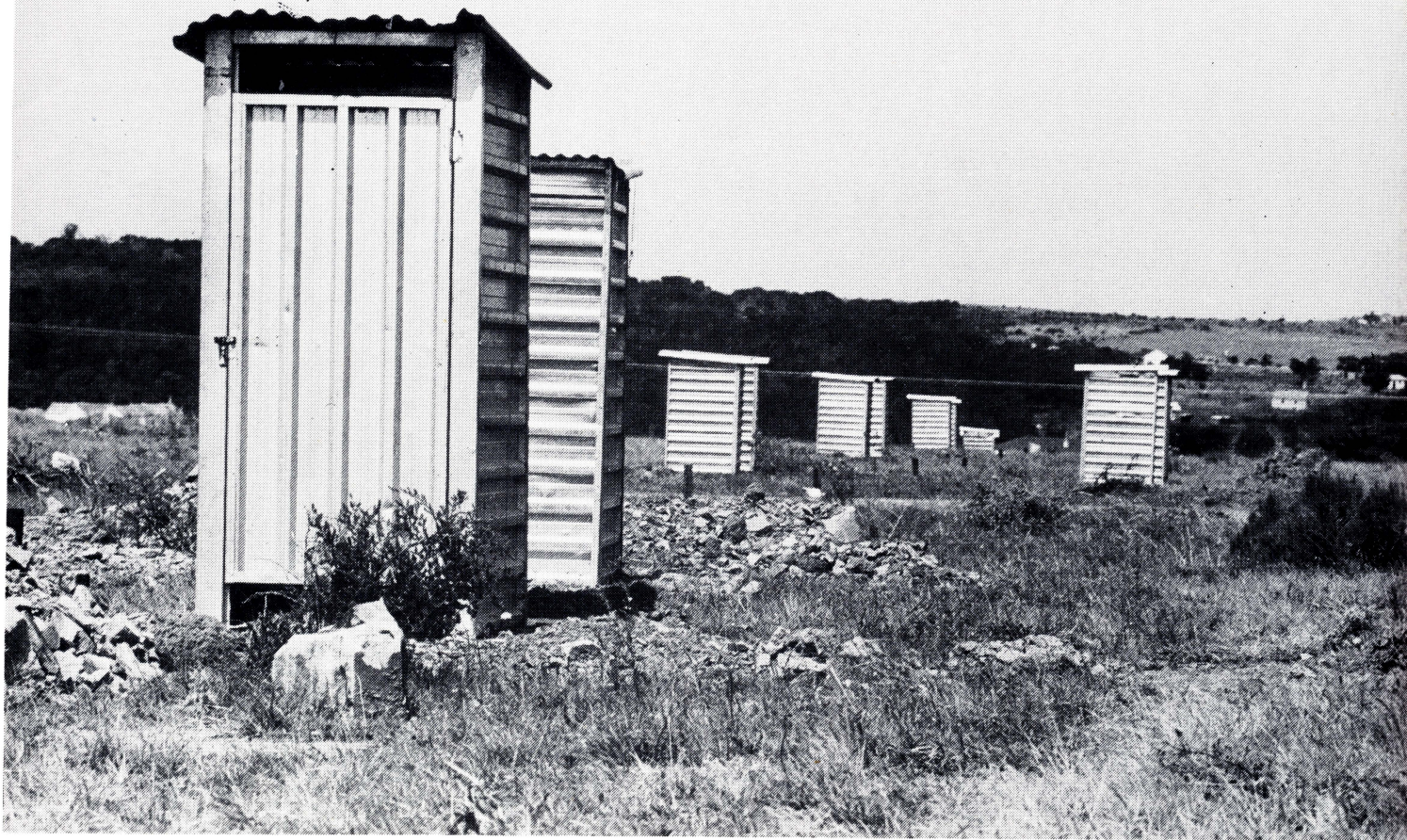
na 1981 - old woman

na 1981 - home provided for resettled family





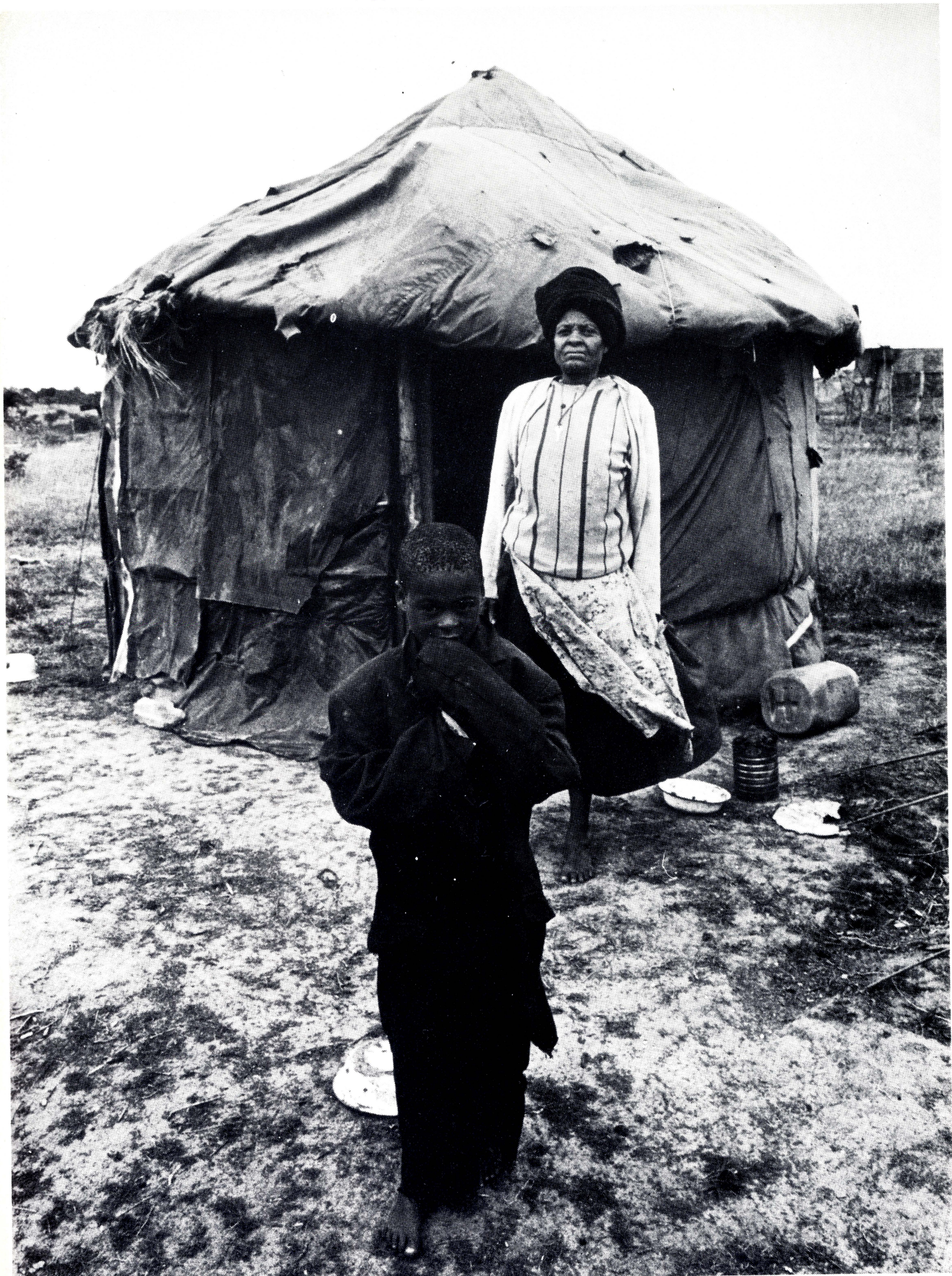
Peddie 1981 - prefabricated housing



Peddie 1981 - prefabricated toilets

Kammaskraal 1982 - moving to Peddie







Kammaskraal 1982 - widow's home after the move to Peddie

Kammaskraal 1982 - moving to Peddie







Kammaskraal 1982 - waiting for the GG lorries

Kammaskraal 1982 - GG lorry loading up





Kammaskraal 1982 - SA government officials supervising the move

Peddie 1982 - Kammaskraal woman and new home

